

Attitude: The motor can be operated in all positions
 Maximum temperature -20°C to +80°C (-4°F to +176°F)
 Muffler supplied with motor

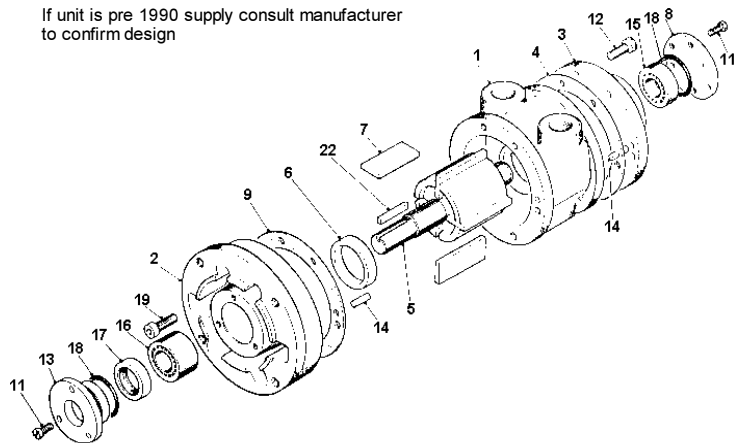
Max. Overhung Force on shaft 620 N (140 lbf.)
 Axial loads should be kept to a minimum
 Mass 12.20 kg (26.89 lb.)

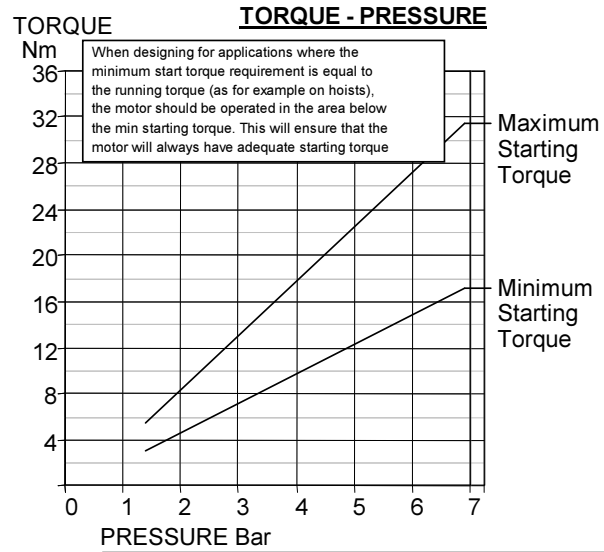
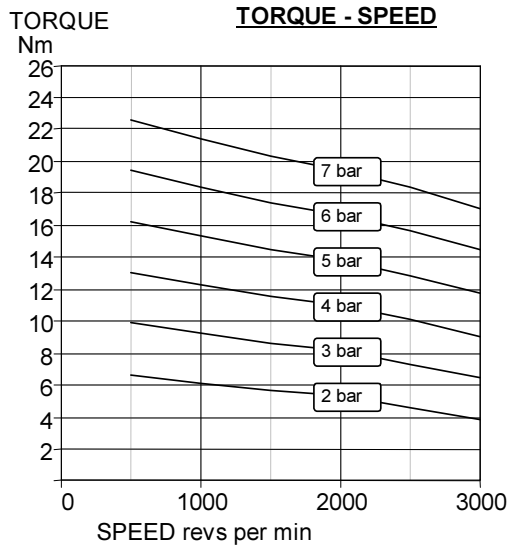
**Note: With air inlet at port 'A',
 rotation is clockwise looking on shaft.
 For opposite rotation reverse ports.**

Exploded view with spare parts list

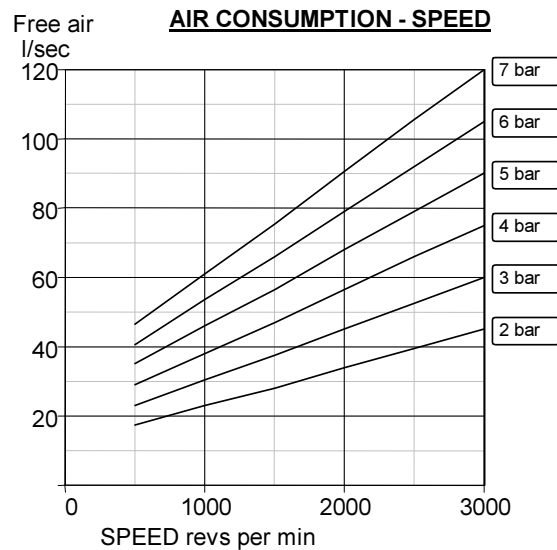
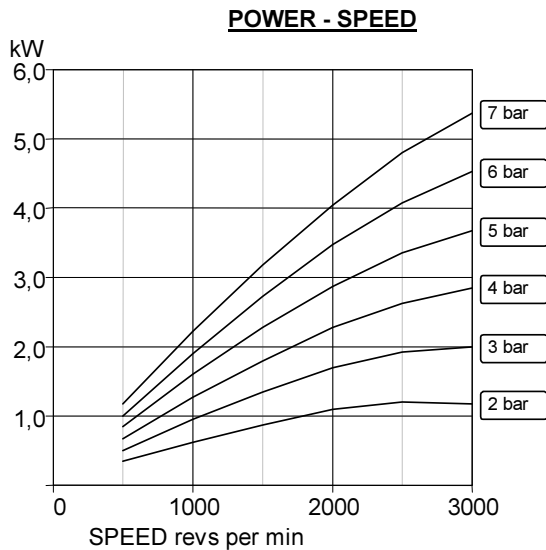
Item	Part No.	Description	Qty	Kit No.
01	780-101	Body BSP	1	
02	780-036	Front Plate D90	1	
03	780-002	End Plate	1	
04	-	Gasket	2	789-910
05	780-922	Rotor Shaft Assy	1	
06	780-006	Ejection Ring	2	
07	-	Blades	4	789-910
08	740-008	Cover Plate	1	
09-1	-	Gasket	1	789-910
09-2	-	Gasket	1	789-910
09-3	-	Gasket	1	789-910
11	802-001	Screw	6	
12	802-032	Screw	6	
13	780-007	Seal Housing	1	
14	806-024	Dowel	4	
15	807-026	Bearing	1	
16	807-036	Bearing	1	
17	-	Oil Seal	1	789-910
18	-	O Ring	2	789-910
19	809-030	Screw	6	
22	811-042	Key	1	
	789-910	V8 Seal Kit		
	820-006	Silencer 1" BSP	1	

If unit is pre 1990 supply consult manufacturer to confirm design





A pressure regulator should be used to control the air pressure to the motor, to limit the maximum output torque applied to the driven assembly.



Muffler supplied with motor.
Motor is reversible.

Attitude: The motor can be operated in all positions.
Maximum temperature -20°C to +80°C (-4°F to +176°F).

Max. Overhung Force on motor shaft 620 N (140 lbf.).
Axial loads should be kept to a minimum.

AIRLINE FILTRATION AND LUBRICATION

Use 64 micron filtration or better. Choose a lubricator suitable for the flow required. Prior to initial start-up, inject oil into the inlet port.
Lubricator drop rate 6-7 drops/minute continuous operation.
Lubricator drop rate 12-15 drops/minute intermittent operation.

Maximum continuous speed 3000 rpm